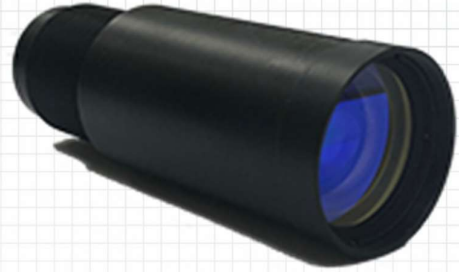


VIS + SWIR A thermal mono focal – commercial off the shelf lens

RP125A12

VIS+SWIR 12.5mm F/1.2 A-thermal mono focal lens for 9.6 x 7.68mm detectors



FEATURES / APPLICATIONS / CAPABILITIES

- Very wide spectral band A-thermal design for **100°C** span
- True high performance A-thermal lens for VIS + SWIR detectors

PARAMETER		VALUE	NOTES
Main	Sub		
🔍 OPTICAL			
Focal Length / F#		12.5mm / F1.2	A-thermal lens. Nominal Values
Working spectral band		0.6 - 1.7 μ	
Detector (FPA) type / size		9.6 x 7.68 mm	12 μ , 15 μ or 20 μ pitch
Optical configuration		Single focus A-thermal lens	
FOV (degrees)		45° (H) x 35.5° (V)	
Average transmission: > 75%			
Optical Back Focal Length		6 mm	
Mech. Back Working Distance		4.5mm	
⚙️ MECHANICAL			
Focus / Zoom mechanism		NA	A-thermal lens
Total Weight		120 grams	
Structure		Open frame, Front element sealed to front element flange.	
External Dimensions		30mm diameter x 81mm Length	
🌍 ENVIRONMENTAL			
Operating Temperature		-40°C to +60°C	A-thermalized for 100°C temperature span.
Storage Temperature		-40°C to +70°C	
Shock and Vibrations		Per applicable standard	
Front lens sealing		IP67	By request